

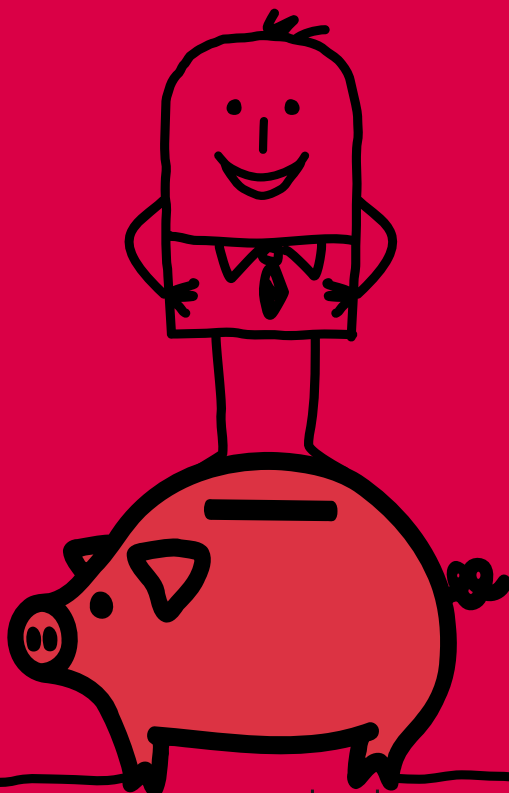
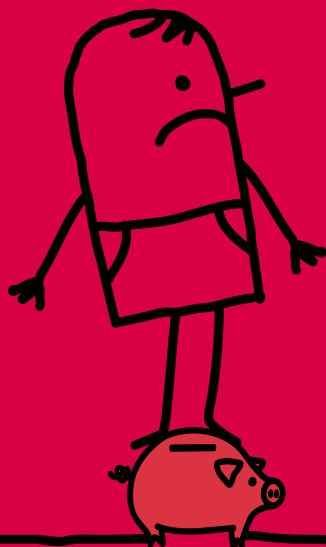
Benefit Changes

ARE YOU PREPARED?

2. Universal Credit



The Government is making big changes to welfare benefits. **Find out how the changes affect you.**



From October 2013 the following benefits will be replaced with a single benefit, called **Universal Credit**

- Income Support
- Income based Jobseeker's Allowance
- Income related Employment and Support Allowance
- Housing Benefit
- Tax Credits

Universal credit will normally:

- Be paid monthly in arrears
- Be paid to a single person in the household

People who are of working age and claim the stated benefits will move onto Universal Credit in phases:

- Between October 2013 and March 2014 new claims for unemployed people will be treated as claims for Universal Credit. Existing customers claiming an out of work benefit may also move to Universal Credit if they have a significant change in their circumstances.
- From April 2014 new claims for working people will be treated as claims for Universal Credit.
- From April 2014 the Department for Work and Pensions will also start to move people from their existing benefits to Universal Credit. It is expected that it will take until 2017 to move all customers.

It is expected that the Department for Work and Pensions will contact people directly to let them know when they are moving to Universal Credit.

For more information about Universal Credit visit <http://www.dwp.gov.uk/docs/universal-credit-faqs.pdf>

Benefit Cap

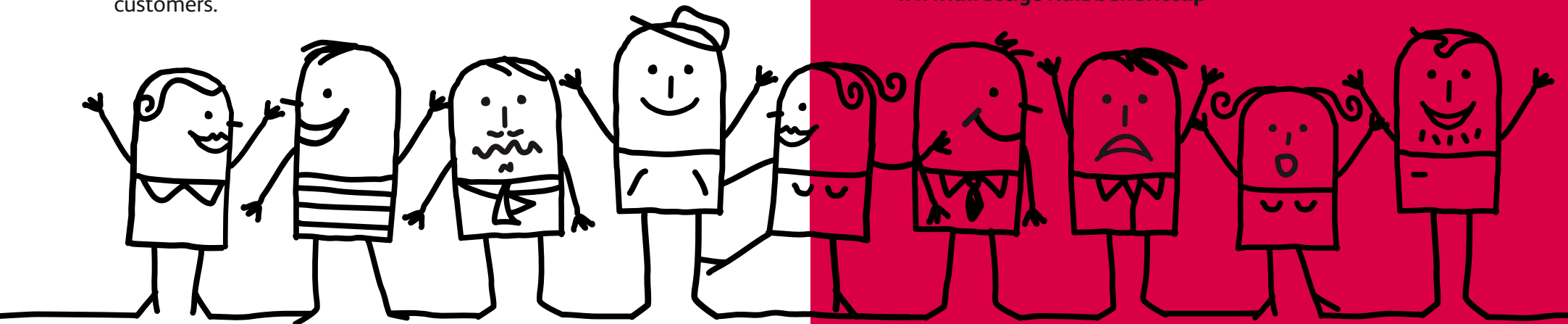
From April 2013 there will be a national cap on the amount of benefits a single person or family can receive. The cap is £500 a week for a family, and £350 a week for a single person. This is known as the benefit cap.

If you are already getting more than £500 (family) or £350 (single) a week in benefit, your Housing Benefit will be reduced and you may have to move to cheaper housing.

The benefit cap does not apply where any household member receives:

- Disability Living Allowance or Personal Independence Payments
- Attendance Allowance
- Working Tax Credit
- The support component of Employment Support Allowance
- War Widows/Widowers Pensions

For more information on the benefit cap visit www.direct.gov.uk/benefitcap



If you have received a letter from the Department for Work & Pensions advising you that you may be affected by the benefits cap and need more information, please telephone the helpline on **0845 6057064** or textphone **0845 6088551** for people with hearing or speech impairments.

Who can I talk to about the benefit changes?

DWP Helpline:.....0845 6057 064

Citizens Advice Bureau:.....0844 4111 444
(landline)

0300 3300 650
(mobile)

Housing and Council Tax Benefit:.....01709 336065

